

54
17.1
16.8
16.5
16.2
15.9
15.6
15.3
15.0
14.7
14.4
14.1
13.8
13.5
13.2
12.9
12.6
12.3
12.0
11.7

14.8
14.4
14.0
13.6
13.2
12.8
12.4
12.0
11.6
11.2
10.8
10.4
10.0
9.6
9.2
8.8
8.4
8.0
7.6
7.2
6.8
6.4
6.0
5.6
5.2
4.8
4.4
4.0
3.6
3.2
2.8
2.4
2.0
1.6
1.2
0.8
0.4
0.0

338
135
1690
1014
338
45630
320
136

13
14
27
13.5

4

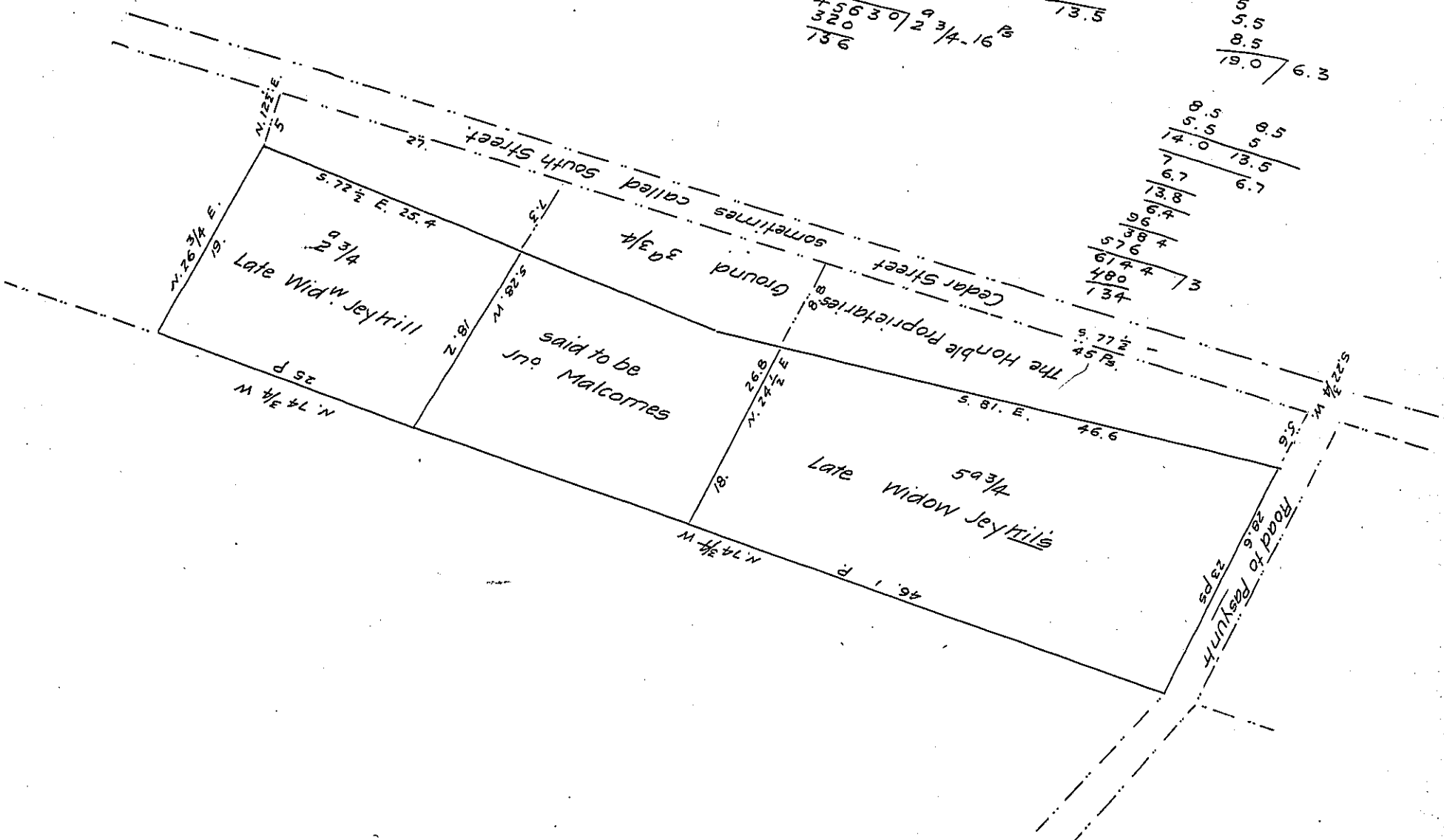
2

5
5.5
8.5
19.0
6.3

8.5
5.5
14.0
7
6.7
13.8
6.4
96
38
576
674
480
134

3

5.77 1/2
45 P.



Surveyed Decemr 1st, 1769 at the request of the Sheriff but not having the deeds we are not certain of the lines

IN TESTIMONY that the above is a copy of the original remaining on file in the Department of Internal Affairs of Pennsylvania, made conformably to an Act of Assembly approved the 16th day of February, 1833, I have hereunto set my Hand and caused the Seal of said Department to be affixed at Harrisburg, this twenty-third day of August 1911

*Henry Howell*  
Secretary of Internal Affairs.